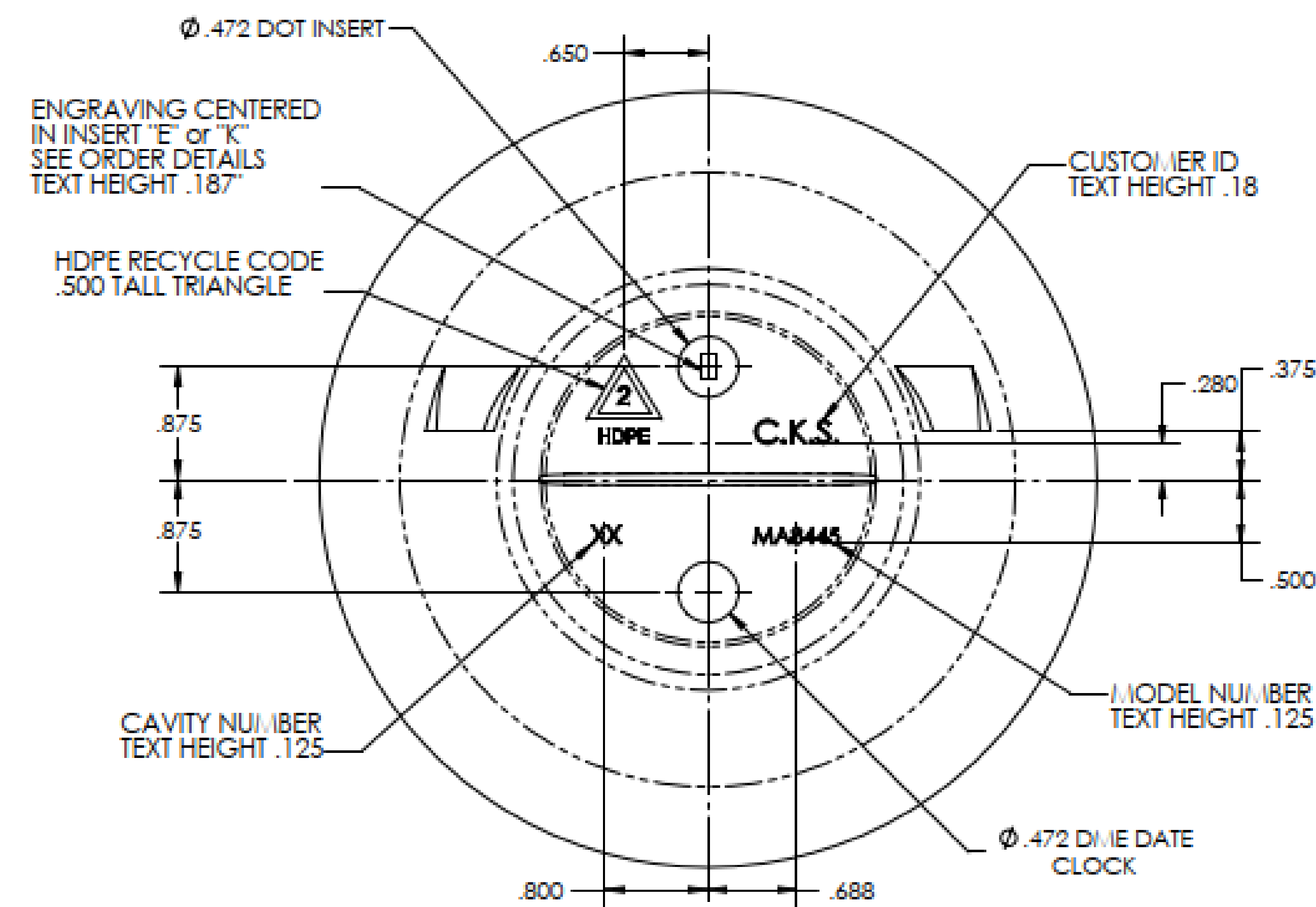


38mm SP400 NECK
DETAIL 2X SCALE

NOTES:

- 1) "M" STYLE THREAD
- 2) 6 THREADS PER INCH
- 3) THREAD START 60° FROM
PL IN BUSHING HALF
- 4) 750° TURNS OF THREAD
AT FULL DEPTH



ALL ENGRAVING RAISED .008-.010

Notes:

- 1) Tolerances Unless Specified:
Vertical -- ± .080
Horizontal -- ± .090
Volumetric -- ± 1.50 oz
- 2) Bottles to be Checked Aged with 20 °C water
- 3) Minimum Wall Thickness of 0.015"
- 4) Weight - 115-140 grams Depending on Part Number

DISCLAIMER

THIS INFORMATION IS PROVIDED AS A GENERAL GUIDE, INCLUDING DIMENSIONS. IT IS THE CUSTOMER'S RESPONSIBILITIES TO SELECT THE PROPER CONTAINER FOR PRODUCT AND APPLICATION COMPATIBILITY.

DISTRIBUTED BY:



REF NO.:

DWG31564

DESCRIPTION:

128 oz Black HDPE Industrial Round, 38-400