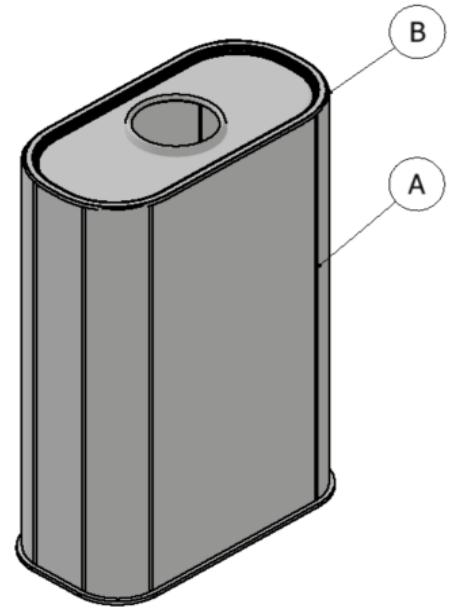


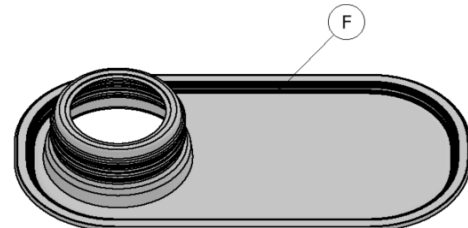
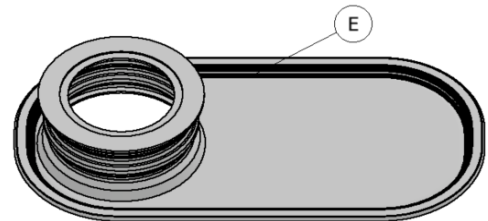
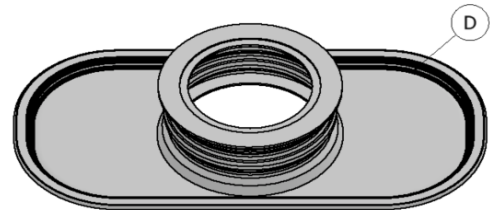
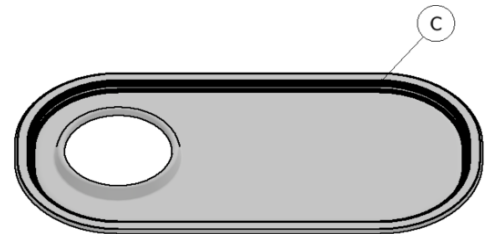
Product Description

Item	Part Description
A	"F Style" Oblong Can
	Capacity: Pint
	Material: Tin
	Lithography: Available
	UN Certifications: Pint cans are not UN approved
B	24 mm REL Center Opening
C	24 mm REL End Opening
D	1 1/4 in. Alpha Nozzle Center Opening
E	1 1/4 in. Alpha Nozzle End Opening
F	1 in. Delta Nozzle End Opening
G	.954 Stull Nozzle (Plastic)



Shipping Data

Item	Capacity	Can Size	Shipping Qty (Per Pallet)
A	Pint	3.75 x 1.73 x 5.89	2,352



DISTRIBUTED BY:



REF NO.:

DWG10118

DESCRIPTION:

1 Pint F-Style Metal Can, with Opening Options, Unlined

DISCLAIMER

THIS INFORMATION IS PROVIDED AS A GENERAL GUIDE, INCLUDING DIMENSIONS. IT IS THE CUSTOMER'S RESPONSIBILITIES TO SELECT THE PROPER CONTAINER FOR PRODUCT AND APPLICATION COMPATIBILITY.