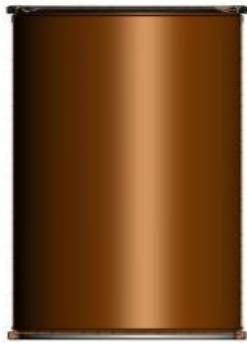
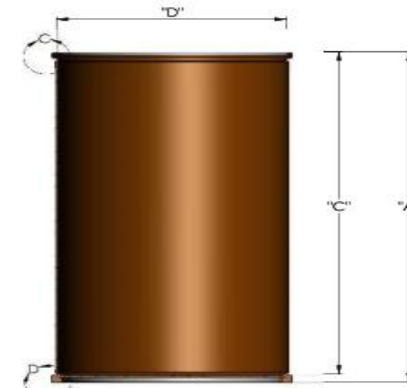
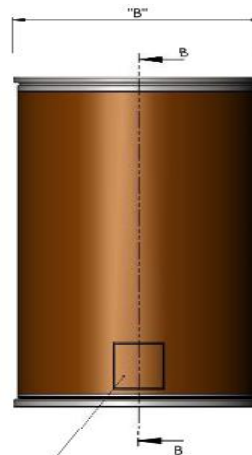


ITEM	DIMENSIONS
A	38.000
B	22.375
C	37.000
D	21.500



SECTION A-A




SECTION B-B

FREIGHT CLASS STAMP	
1,200	PSI SIDEWALL RATING
600	LB. WEIGHT CAPACITY RATING

TOLERANCES		
BREAK ALL SHARP EDGES UNLESS SPECIFIED	FRACTIONAL ± 1/64"	DECIMALS .XX ± .005"
	ANGULAR ± 0° 30'	.XXX ± .002" .XXXX ± .0005"
DO NOT SCALE DRAWING		

DISCLAIMER


THIS INFORMATION IS PROVIDED AS A GENERAL GUIDE, INCLUDING DIMENSIONS. IT IS THE CUSTOMER'S RESPONSIBILITIES TO SELECT THE PROPER CONTAINER FOR PRODUCT AND APPLICATION COMPATIBILITY.

DISTRIBUTED BY:		REF NO.:
DESCRIPTION:		DWG 31248
55 Gallon Fiber OH Drum, 6 mil LLDPE Lined, Kraft, HDPE Natural Plastic Cover, 2" & 3/4" Fittings, Loc Ring		

LOC RIM DRUM SPECIFICATION SHEET

GALLON CAPACITY		55
INSIDE DIMENSIONS	(DIAMETER X HEIGHT) ...	21 ½" x 37"
OUTSIDE DIMENSIONS	(DIAMETER X HEIGHT) ...	22 ¾" x 38"
TARE WEIGHT		18.5 lbs. (Approx.)
SIDEWALL	GRADE	56# Linerboard
	ADHESIVE	Sodium Silicate
	LINING/BARRIER	6 mil LLDPE
	PLYS	8 Plys Total
	TEST	1,200 psi
PACKAGING WEIGHT LIMIT		600 lbs.
BOTTOM HEAD ELEMENT	TYPE	Laminated Fiber
	CALIPER	0.220"
	MULLEN	1,300 psi
	LINING/BARRIER	6 mil LLDPE
BOTTOM CHIME	TYPE	Steel
	GAUGE	22 Ga. (Wide, 3 ¾")
	FINISH	Electro Galvanized
COVER OR TOP HEAD	TYPE	HDPE with Gasket (Bung & Vent)
	CALIPER/GAUGE	60/90 mil
	MULLEN/FINISH	Natural
TOP CHIME	TYPE	Steel
	GAUGE	24 Ga.
	FINISH	Electro Galvanized
CLOSURE	TYPE	Loc Ring (Steel)
	GAUGE	24 Ga.
	FINISH	Electro Galvanized
	LOCK	Bottom Latch
CAPACITY IN CUBIC INCHES		13,625
CAPACITY IN CUBIC FEET		7.88
ADDITIONAL FEATURES	Adiprene seal in bottom chime. Heat seal tape over inside seam.	

Heights are nominal and can vary ±¼"

<p>DISCLAIMER</p> <p>THIS INFORMATION IS PROVIDED AS A GENERAL GUIDE, INCLUDING DIMENSIONS. IT IS THE CUSTOMER'S RESPONSIBILITIES TO SELECT THE PROPER CONTAINER FOR PRODUCT AND APPLICATION COMPATIBILITY.</p>	<p>DISTRIBUTED BY:</p> 	<p>REF NO.:</p> <p>DWG 31248</p>
	<p>DESCRIPTION:</p> <p>55 Gallon Fiber OH Drum, 6 mil LLDPE Lined, Kraft, HDPE Natural Plastic Cover, 2" & 3/4" Fittings, Loc Ring</p>	