



EZ Loc® Cable Seal 1/16", 3/32" & 1/8"

EZ Loc is a medium-duty cargo security seals featuring non-preformed security cable that frays when cut with various marking options for customized tracking. EZ Loc 1/16" is approved by the sweetener industry for bulk rail & truck shipments and the 3/32" is preferred by the chemical & food processing industries.

EZ Loc 1/8" is ISO 17712: 2013 High Security seal and C-TPAT Compliant.

APPLICATIONS

- Rail Cars
- Containers
- Hopper Cars
- Tank Cars
- Tanker Trucks
- Truck & Trailer Doors
- Valves and Meters
- Intermodal Containers

FEATURES

- Available as a Standard Product
- Available as Non-ferrous EZ Loc for flammable environments
- Features non-preformed security cable that frays when cut
- Remove with cable cutters
- Pulls tight for maximum security

MATERIAL

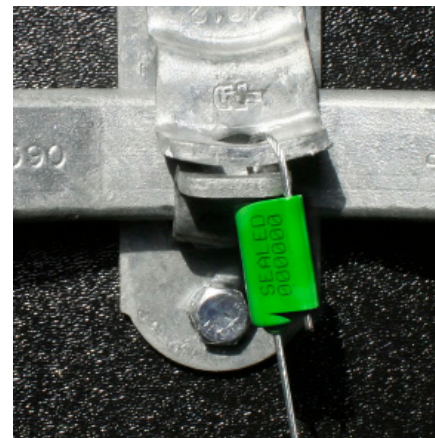
- Lock body: corrosion-resistant cast zinc
- Cable: galvanized non-preformed aircraft control cable

STRENGTH CHARACTERISTICS

- Tensile strength: 750 lbf (3.3 kN)

DIMENSIONS

Cable diameter:
 1/16" (1.5 mm)
 Standard cable length: 16" (406mm)
 Custom lengths available in 2" (5 cm) increments



DISTRIBUTED BY:



REF NO.:

DWG30539

DESCRIPTION:

Metal EZ Lock Trailer Seal, 1/16" x 16"

DISCLAIMER

THIS INFORMATION IS PROVIDED AS A GENERAL GUIDE, INCLUDING DIMENSIONS. IT IS THE CUSTOMER'S RESPONSIBILITIES TO SELECT THE PROPER CONTAINER FOR PRODUCT AND APPLICATION COMPATIBILITY.