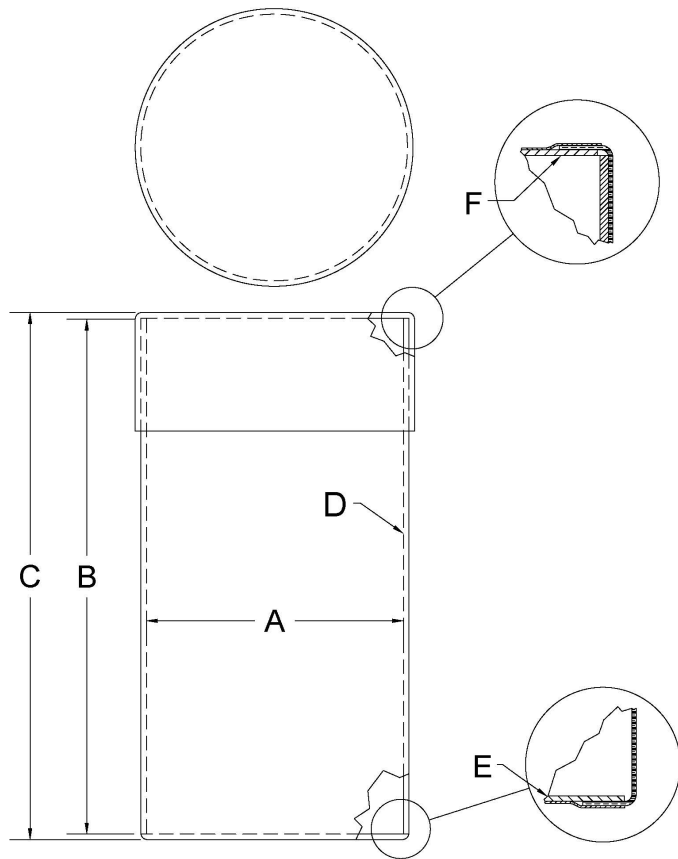


Fibre Drum



Specification

NMFC Article	Item 291 - Dry or Solid
NMFC Net Weight Limit	150#
UN Mark	None
Drum Type	All-Fi Transport
Inside Diameter (A)	11-1/4"
Inside Height (B)	19-1/2"
Outside Height (C)	20"
Tare Weight (approx)	4.5#
Nominal Capacity (U.S. Gallons)	8 Gallons
Exterior Finish	Plain Kraft
Sidewall Construction (D)	Meeting or exceeding min thickness of 600 PSI Mullen
Sidewall Adhesive	Sodium Silicate Between Each Lamination
Lining (D)	None
Barrier (D)	None
Bottom (E)	.120"/800# PSI Heading (Thickness/Test)
Cover Type (F)	Fibre - .120/800# PSI Heading (Thickness/Test)
Additional Construction Information	None
Paint or Skin Color	None
Print Color (Silk Screen)	None
Poly Bag / Bag Option	None
Misc. Treatments	None
Special Instructions	Certificate stamp on sidewall

DISCLAIMER

THIS INFORMATION IS PROVIDED AS A GENERAL GUIDE, INCLUDING DIMENSIONS. IT IS THE CUSTOMER'S RESPONSIBILITY TO SELECT THE PROPER CONTAINER FOR PRODUCT AND APPLICATION COMPATIBILITY.

DISTRIBUTED BY:



REF NO.:

DWG31773

DESCRIPTION:

8 Gallon Kraft Fiber OH Drum with Fiber Cover and Lock Ring