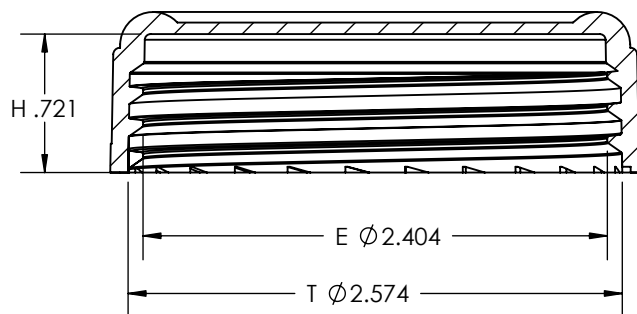
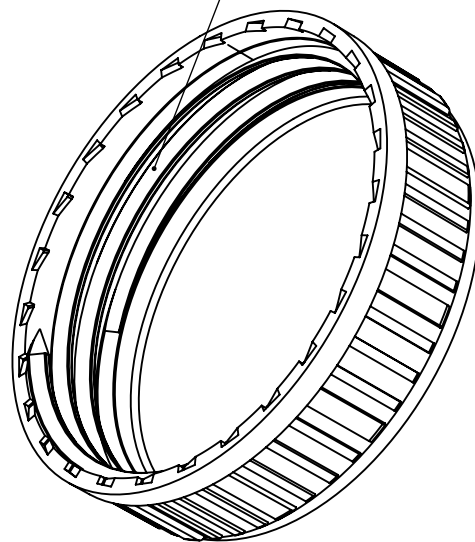


SECTION B-B

6 THREADS PER INCH
.167 LEAD 2 TURNS



SECTION A-A



Cap Weight:
Lined with PE Foam & PS = 15.13 grams
Unlined = 13.57 grams

DISCLAIMER

THIS INFORMATION IS PROVIDED AS A GENERAL GUIDE, INCLUDING DIMENSIONS. IT IS THE CUSTOMER'S RESPONSIBILITIES TO SELECT THE PROPER CONTAINER FOR PRODUCT AND APPLICATION COMPATIBILITY.

DISTRIBUTED BY:



REF NO.:

DWG31040

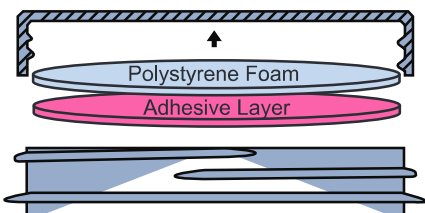
DESCRIPTION:

63-485 White PP Screw Cap with PE Liner

Uni-FoamTM

Technical Data Sheet

PS-113 (Pressure Sensitive)

Product	PS-113 (Pressure Sensitive)		
Scope	One piece uniform polystyrene foam coated on one side with a specially formulated torque-activated adhesive. (Not approved for use with wet products.)		
Composition	Material	Standard	Metric
	Polystyrene Foam	0.020"	0.508 mm
	Adhesive Layer	0.002"	0.051 mm
			
FDA Status: 21 CFR 177.1210		Recommended Storage and Handling: Refer to website	
Drug Master File (DMF): 3948		EU / EP Reg.:	
GTR Oxygen: 2290 cc/m².Day (ASTM D3985)			MVTR: 5.85 g/m².Day (ASTM F1249)
Print Location (if any):			

materials are compliant with limitation of heavy metals in packaging per CONEG & EU 94/62/EC, article 11.

MSDS's are not required as Pipeline Packaging is not a chemical manufacturer or distributor and our products are 'articles' intended for food packaging per 29 CFR 1910.1200 (HazCom).

DISCLAIMER

THIS INFORMATION IS PROVIDED AS A GENERAL GUIDE, INCLUDING DIMENSIONS. IT IS THE CUSTOMER'S RESPONSIBILITIES TO SELECT THE PROPER CONTAINER FOR PRODUCT AND APPLICATION COMPATIBILITY.

DISTRIBUTED BY:



REF NO.:

DWG31040

DESCRIPTION:

63-485 White PP Screw Cap with PE Liner